

Software Package SPE is dedicated for electricity meters testing and calibration. The package contains routines for control of hardware, data acquisition, evaluation of measurements, meter data exchange, output of documents, data archiving, data analysis and system maintenance.

Highlights

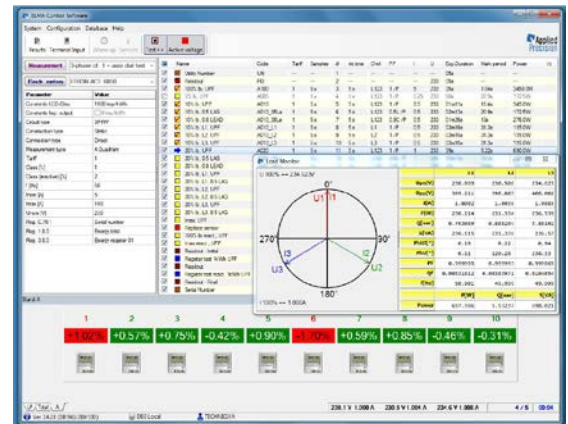
- User friendly programs for Microsoft Windows.
- Network support in distributed systems: client / server communication with central database, via any type of computer network.
- Multilingual user interface with predefined and user definable dictionaries enables immediate national or regional dialect implementation.
- Simple switch of display format from global characteristics of the process to detailed results on any meter.
- Simple input of meter parameters, user defined tests, test sequences, addresses and user friendly operations with respective databases.
- User defined test limits with support of IEC standards and local regulations.
- Graphical representation of measurement results, errors (deviations) and measuring curves.
- Free defined output documents for Microsoft Office.
- Support for mobile terminals with a manual or barcode data acquisition.
- Possibility for any harmonic contents definition in measuring power signals.
- Support for communication with electronic meters.
- Simultaneous test of meters with different constants.

Archive Program ARCHIVER

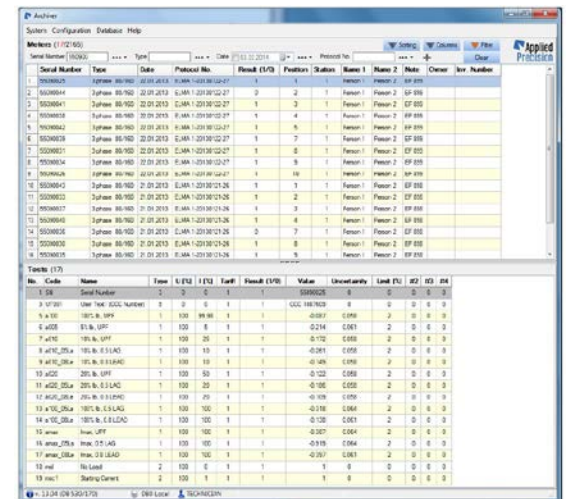
- Evaluation of archives.
- Sorting and printing according to various criteria.

Complete software package for electricity meter testing

SPE 1001	Software package for 1 meas. position - licence for max. 1 single- or three- phase measuring position
SPE 1003	Software package for 3 meas. positions - licence for max. 3 single- or three- phase measuring positions
SPE 1005	Software package for 5 meas. positions - licence for max. 5 single- or three- phase measuring positions
SPE 1006	Software package for 6 meas. positions - licence for max. 6 single- or three- phase measuring positions
SPE 1110	Software package for 10 meas. positions - licence for max. 10 single-phase measuring positions
SPE 1310	Software package for 10 meas. positions - licence for max. 10 three-phase measuring positions
SPE 1120	Software package for 20 meas. positions - licence for max. 20 single-phase measuring positions
SPE 1320	Software package for 20 meas. positions - licence for max. 20 three-phase measuring positions
SPE 1124	Software package for 24 meas. positions - licence for max. 24 single-phase measuring positions
SPE 1324	Software package for 24 meas. positions - licence for max. 24 three-phase measuring positions
SPE 1100	Software package for unlimited meas. positions - licence for unlimited number of single-phase measuring positions
SPE 1300	Software package for unlimited meas. positions - licence for unlimited number of three-phase measuring positions



Control Program SPE



Archive Program ARCHIVER