

The program is designed for static meters operation either with simple registers or with smart, programmable functions. For programming there are used PCs (the ports COM, USB), where the communication interfaces are connected for performance of serial two-way communication in accordance with IEC/EN 62056-21.

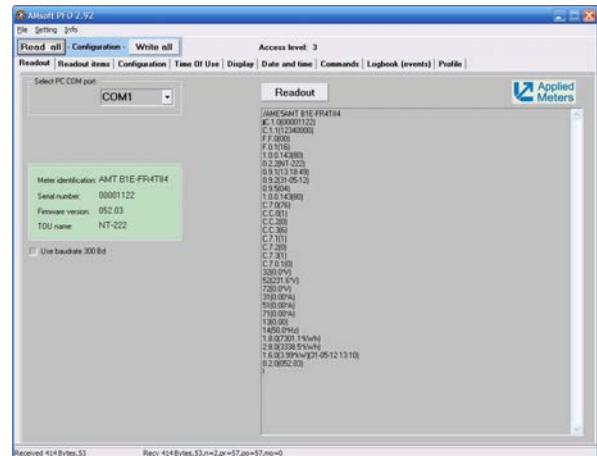
## The program permits:

- Entry into the program using passwords (for different levels of access);
- Setting of single and three phase electricity meters;
- Data readout and parameterization of electricity meters;
- Archiving read out data;
- Loading and saving parameter files;
- Possibility to use different language versions.

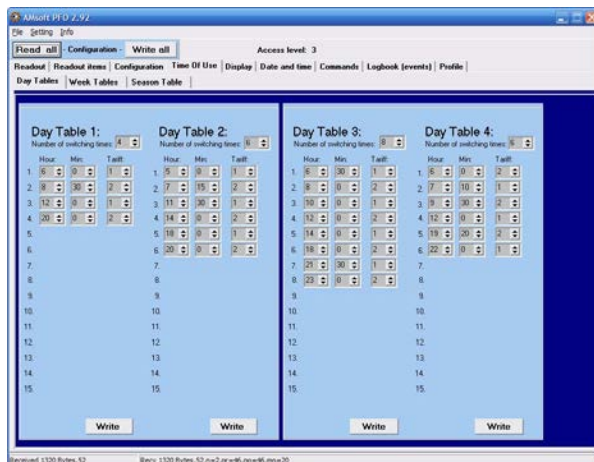
## Examples of screenshots



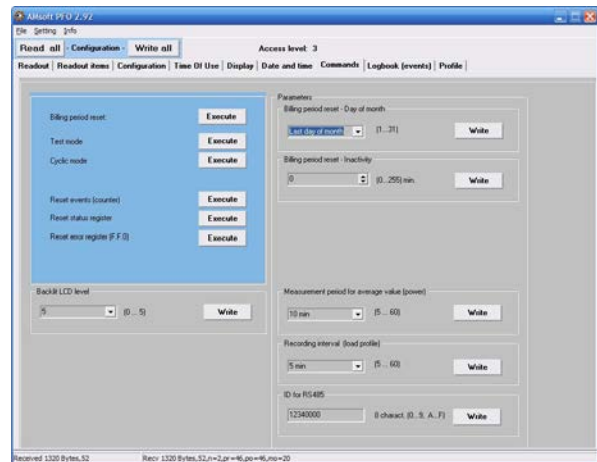
Initial screen



Data readout



Switching times and tariffs – Day Tables



Parameter setting