

Three-phase static electricity meters **AMT B3x-FA4SET** are determined for measurement of active energy, instantaneous active power for consumption and supply, voltage, current and power factor in 3-phase 4-wires network in direct connection. They enable measurement of energy in rates controlled by internal clock (up to 4 rates) or externally controlled in two rates.

The measured values stored into special registers according to the OBIS codes are displayed on LCD in cyclic or step mode. The data are stored in non-volatile memory during power outage, which can be viewed on the LCD. The electricity meters can be parametrized and readout by using optical probe AMOS type and software supplied by the manufacturer. The testing pulses proportional to the consumed energy are signalling by a red LED. The meters can be produced in version with measurement in summary mode (unidirectional register) or with measurement in separation mode (consumption – supply).

Highlights

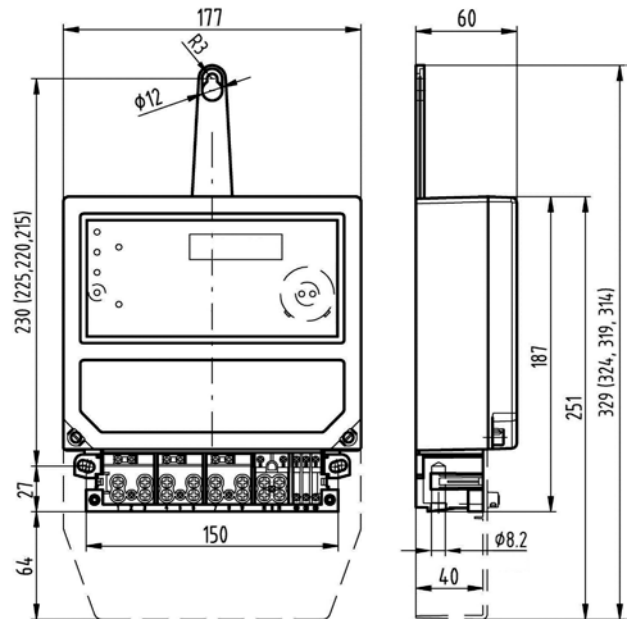
- Measurement of energy, power, voltage, current, power factor... (A+, A-, P+, P-, U, I, PF...);
- Historical records of the selected registers, created in the end of month - maximum 15 month historical records (A+, A-);
- Number of events records (about influence of magnetic field, missing voltage, covers removal...);
- Event records in separate logbooks (logbook 1 - 3);
- Passive impulse SO outputs for remote transmission;
- Communication interface: optical and RS485;
- Welded case on customer request;
- Complies with IEC/EN 62052-11 + IEC/EN 62053-21; EN 50470-3 and with requirements of European Parliament and EC Directive 2014/32/EU (MID);
- Supplied initially verified for the billing measurement of active energy.

Technical data

Accuracy class	A, B
Reference voltage [V]	3 x 220/380, 3 x 230/400, 3 x 240/415 (-30,+15%), 220, 230, 240
Reference frequency [Hz]	50
Reference current I_{ref} [A]	5 and 10
Transient current I_{tr} [A]	0,5 and 1
Starting current I_{st} [A]	≤ 0,02 and 0,04
Minimal current I_{min} [A]	0,25 and 0,5
Maximal current I_{max} [A]	40, 50, 60, 80, 100
Power consumption - voltage circuit [VA/W]	≤ 7,7/ 1,2
Power consumption - current circuit [VA]	≤ 0,006 (for 5 A); 2,25 (for 100 A)
Impulse constant [imp/kWh] for test output k_{TO}	1000
Transistor output SO	24 V / 30 mA
Operating temperature	- 40 °C up to + 70 °C
Mean temperature coefficient [%/K]	≤ 0,04
Terminals current ; auxiliary [mm]	ø8 ; ø3
Degree of protection meter case / terminal block	IP54 / IP53
Meter dimensions w x h/h' x d [mm]	177 x 187 / 251 x 60
Fixing holes distance w x h [mm]	150 x 215-230
Weight [kg]	≤ 1,23



Dimensional drawing



Marking of meters

AMT B3x-FA4SET x₁₂

AMT B3 .. type designation

x₅ overload capacity: **4** - 400 %, **5** - 500 %, **6** - 600 %, **8** - 800 %, **A** - 1000 %, **B** - 1200 %, **D** - 1600 %, **E** - 2000 %

F basic version: multifunctional electricity meter with LCD and RTC

A measured energy: active

4 network connection: 3-phase 4-wire

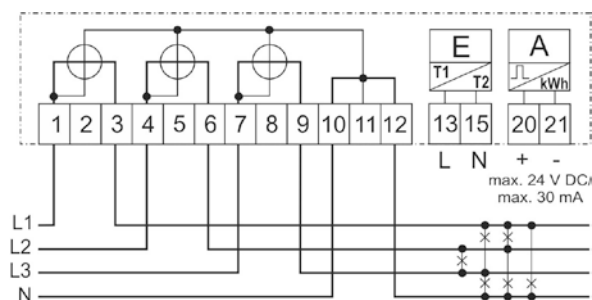
S current converter: shunt

E case version: up to 100 A, with drilling of current terminals ø 8 mm

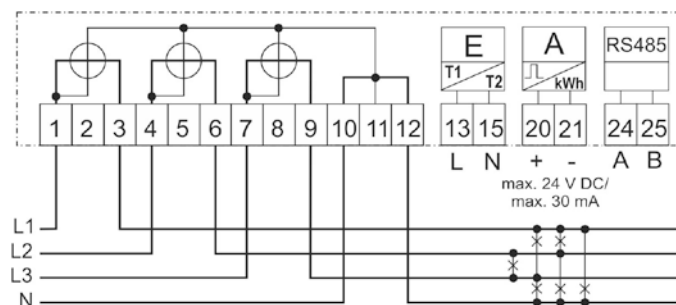
T used processor

x₁₂ special modules: **E** - external control of the second rate; **4** - RS 485 interface; **without mark** - internal control of the rates (*ToU*), **Y** – internal relay coupled with RTC (250 V AC /DC, 2 A)

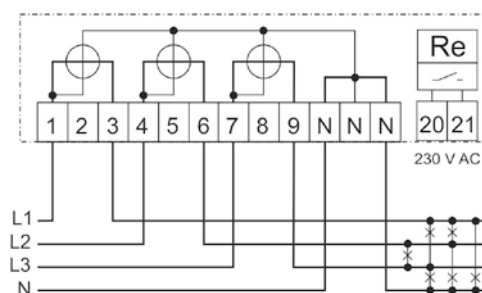
Connection diagrams - examples



Double-rate electricity meters with output SO



Double-rate electricity meters with output SO and RS485 interface



Single-rate electricity meters with relay

Ordering data

- Type of meter and version;
- Reference voltage a current range I_{ref}/I_n , I_{max} ;
- Reference frequency;
- Number of units;
- Required delivery terms.